

A large, blue, stylized sculpture of a human face with a sad expression, featuring deep-set eyes and a downturned mouth. The sculpture is set in a park-like environment with dry grass and bare trees in the background.

ANTHONY
GALLERY

ERI IWANURA
Blue on the Hill.

sales@anthonygallery.com

APRIL 11 - MAY 13
1360 W. Lake St.

ANTHONY GALLERY



En Iwamura (b. 1988) is a multi-medium artist from Kyoto, Japan. Iwamura's works are known for his ingenuitive use of vibrant color palettes, bold lines, and eye-catching features, that lure viewers in. His work on universal mediums are transcendent, speaking international languages to global audiences – forming relationships between viewers across cultures, peoples, and countries.

Iwamura's current research explores the Japanese philosophy Ma, which calls for a personal investigation in installed and occupied spaces. This exhibition explores how the manipulation of artistic materials can influence how viewers experience and encounter space in the midst of installed artworks. These site-responsive installations challenge further consideration of distance, space, time, relationship, and the present moment, simultaneously.

Anthony Gallery 2023

En Iwamura Solo Presentation

Hues of blue saturate the ceramic statues skillfully crafted by Japanese artist En Iwamura in the exhibition “Blue on the Hill” at the Anthony Gallery.

Exploring the concepts of the Japanese philosophy Ma, Iwamura is interested in providing viewers with opportunities to engage with the layers of Ma’s within themselves – as they encounter installed and occupied spaces. Ma implies that physical space has deeper entanglements with distance, relationship, memory, the present moment, as well as other atmospheric spaces. En Iwamura's use of blue gradients on ceramic figures, with varying facial expressions, challenge viewers to address the works – while also addressing themselves.

Natural environments provide a sense of security, and call for mindfulness, present consciousness, and concentration. In many cultures, the color blue is indicative of water, sea, wind, air, and sky – reflecting the pigments of these environmental components. However, the elemental presence of the color blue brings a coolness that symbolizes dignity, purity, and calmness. When the physical body is near water its properties, including its color, establish an inherent sense of ease. As the internal state expands, it peacefully begins confronting the forces beyond the self.

The talented and versatile contemporary artist has a unique style, often expressed across multiple mediums. Originally from Kyoto, Japan, he was exposed to an artistic environment at a young age – thus informing the trajectory of his career and creative lifestyle. Iwamura’s works are known for his ingenuitive use of vibrant color palettes, bold lines, and eye-catching features, that lure viewers in. His work on universal mediums are transcendent, speaking international languages to global audiences – forming relationships between viewers across cultures, peoples, and countries. En Iwamura graduated with a BFA in craft at the Kanazawa College of Art and Craft in 2011, and continued his education which led to receiving a MFA from the Kanazawa College of Art and Craft in 2013 and a second MFA from Clemson University in 2016.

Aside from his art, Iwamura is known for being incredibly gracious and humble. Iwamura is an avid member in the art community, actively willing and eager to share his knowledge or experience with others – commonly participating in workshops or lectures to aspiring artists. While his works are highly sought after by art collectors and enthusiasts across the globe, his current work in the exhibition “Blue on the Hill” will engage diverse demographics at the Anthony Gallery this April. His current research probes, dissects, and explores how the manipulation of artistic materials can influence how viewers experience and occupy space in the midst of installed artworks. These site-responsive installations charge viewers to consider distance, space, time, relationship, and the present moment, simultaneously.

These artistic delicacies are situated on the floor of Anthony Gallery’s new location in Fulton Market, bridging pathways from Kyoto, Japan to Chicago, Illinois – allowing for an onsite investigation and personal encounter with Iwamura’s work. This exhibition will pull together diverse audiences, charging viewers to consider the most natural and instinctive human responses – as they view works and delve into concepts of personal and collective recognition, recollection, and reaction, as it relates to how one can experience a “space”.

sales@anthonygallery.com

www.anthonygallery.com

T: 312.374.3129



En Iwamura
Blue on the Hill 1, 2021.
Ceramics
H61.8 x W32.6 x D31.8(inch)
H157 x W83 x D81(cm)



En Iwamura
Blue on the Hill 2, 2021.
Ceramics
H57 x W46 x D40(Inch)
H145 x W117 x D99(cm)



En Iwamura
Blue on Hill 3, 2021.
Ceramics
H46.4 x W36.2 x D34.2(Inch)
H118 x W92 x D87(cm)



En Iwamura
Blue on Hill 4, 2021.
Ceramics
H32.6 x W28.3 x D23.6(Inch)
H83 x W72 x D60(cm)



En Iwamura
Blue on Hill 5, 2021.
Ceramics
H31.5 x W26 x D30(Inch)
H80 x W66 x D65(cm)



En Iwamura
Neo Jomon: Purple Hyakume, 2021.
Ceramics
H18.9 x W14.17 x D14.17(inch)
H48 x W36 x D36(cm)
Weight: 12.6kg



En Iwamura
Boy, 2021.
Ceramics
H12.6 x W12.6 x D12.6(inch)
H32 x W32 x D32(cm)
Weight: 6kg



En Iwamura
Bird, 2021.
Ceramics
H16.9 x W7.9 x D13.77(in)
H43 x W20 x D35(cm)
Weight: 5.6kg



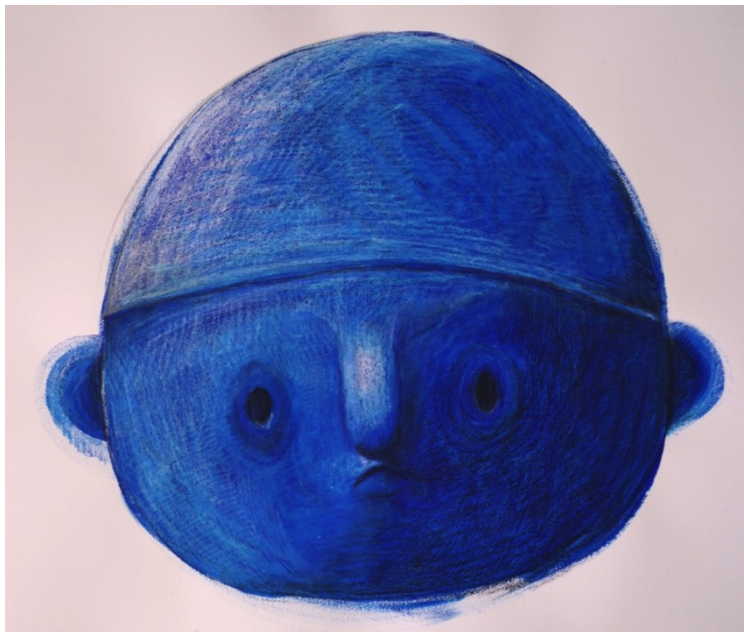
En Iwamura
Monkey, 2021.
Ceramics
H13.38 x W14.17 x D14.17(inch)
H34 x W36 x D36(cm)
Weight: 6kg



En Iwamura
No. 4, 2023
Color Pencil, Crayon, Acrylic paint on paper
32.7" x 43.7" (83 cm x 111 cm)
*Artwork is framed



En Iwamura
No. 1, 2023
Color Pencil, Crayon, Acrylic paint on paper
32.7" x 43.7" (83 cm x 111 cm)



En Iwamura
No. 2, 2023
Color Pencil, Crayon, Acrylic paint on paper
32.7" x 43.7" (83 cm x 111 cm)



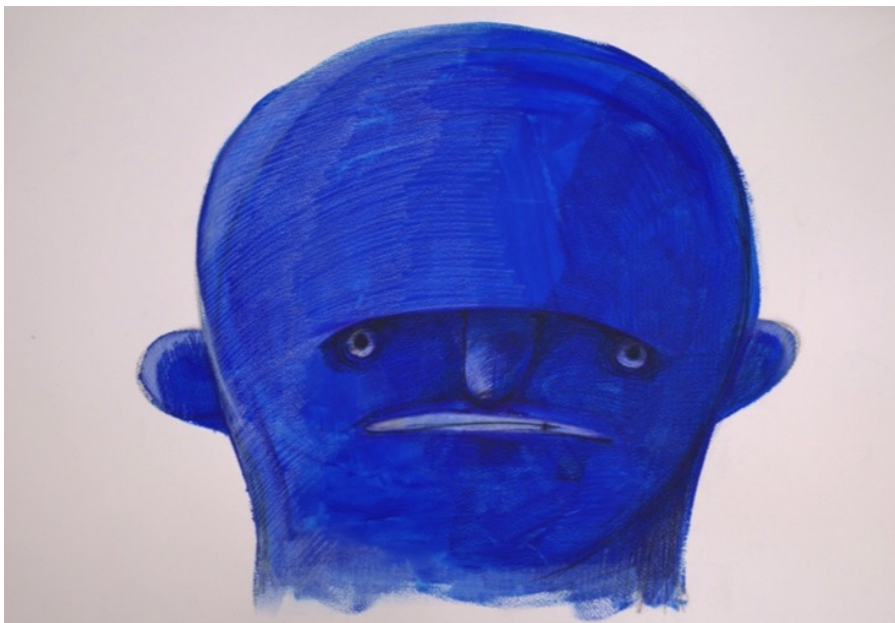
En Iwamura
No. 3, 2023
Color Pencil, Crayon, Acrylic paint on paper
32.7" x 43.7" (83 cm x 111 cm)



En Iwamura
No. 7, 2023
Color Pencil, Crayon, Acrylic paint on paper
21" x 32.7" (55 cm x 83 cm)
*Artwork is framed



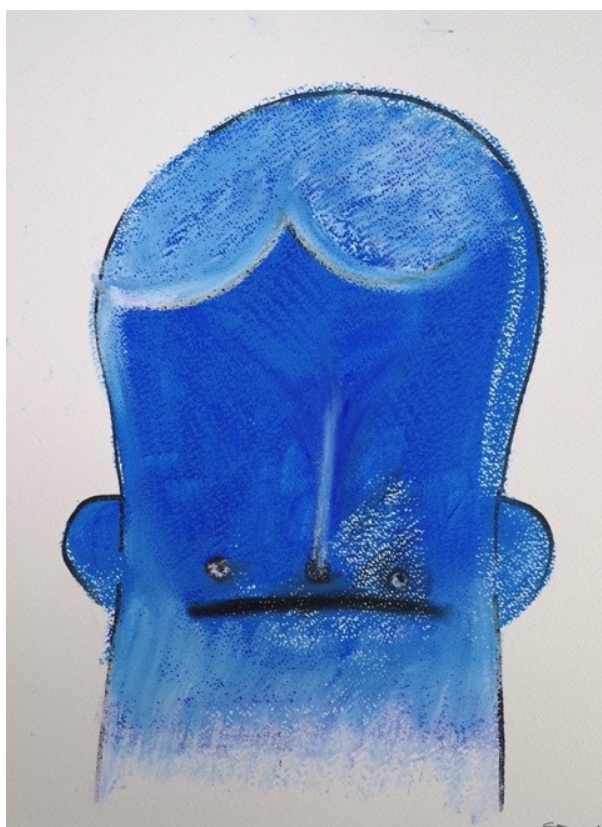
En Iwamura
No. 5, 2023
Color Pencil, Crayon, Acrylic paint on paper
21.6" x 32.7" (55 cm x 83 cm)



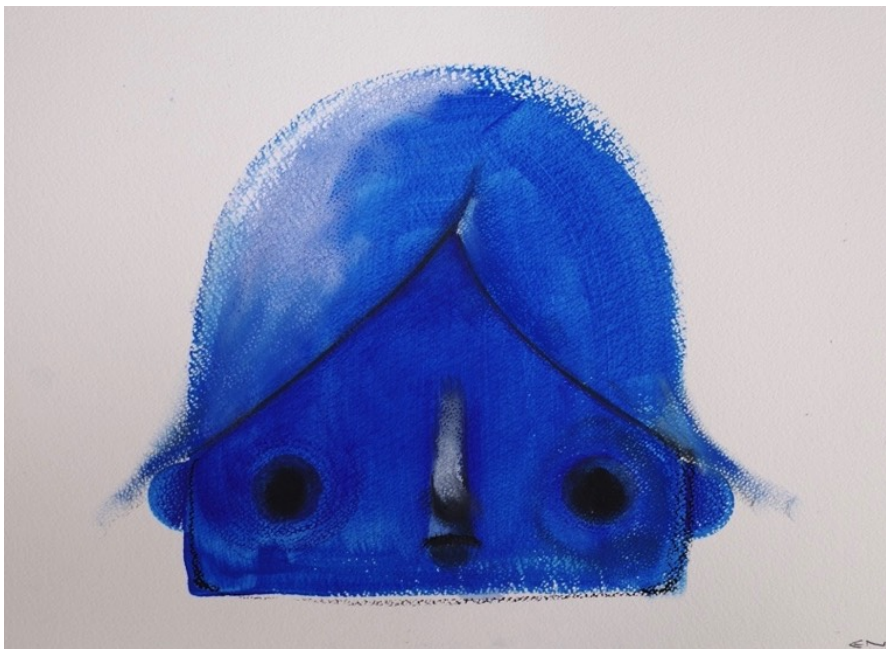
En Iwamura
No. 6, 2023
Color Pencil, Crayon, Acrylic paint on paper
21" x 32.7" (55 cm x 83 cm)



En Iwamura
No. 8, 2023
Color Pencil, Crayon, Acrylic paint on paper
21.6" x 26.8" (55 cm x 68 cm)



En Iwamura
No. 9 2023
Color Pencil, Crayon, Acrylic paint on paper
13" x 9.4" (33 cm x 24 cm)
*Artwork is framed



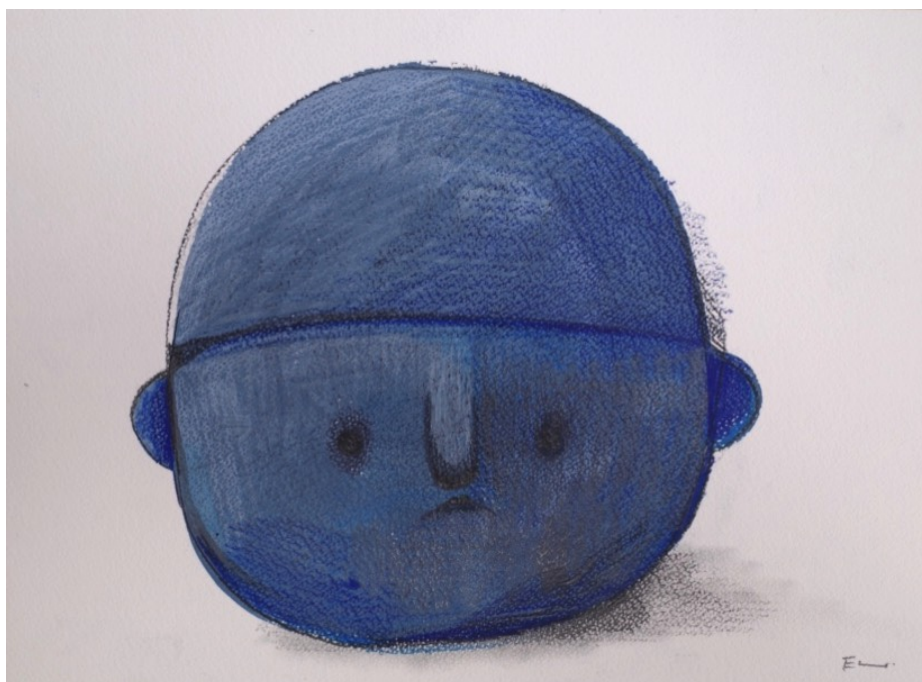
En Iwamura
No. 11, 2023
Color Pencil, Crayon, Acrylic paint on paper
13" x 9.4" (33 cm x 24 cm)
*Artwork is framed



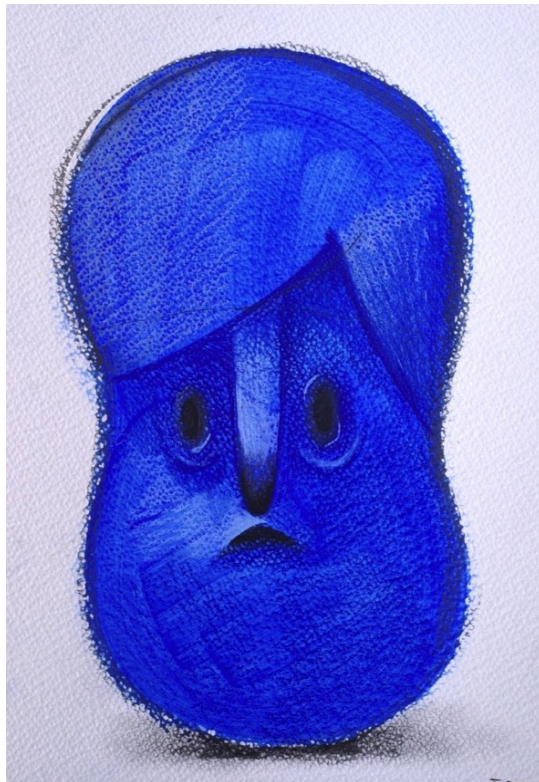
En Iwamura
No. 12, 2023
Color Pencil, Crayon, Acrylic paint on paper
13" x 9.4" (33 cm x 24 cm)
*Artwork is framed



En Iwamura
No. 10, 2023
Color Pencil, Crayon, Acrylic paint on paper
13" x 9.4" (33 cm x 24 cm)



En Iwamura
No. 13, 2023
Color Pencil, Crayon, Acrylic paint on paper
13" x 9.4" (33 cm x 24 cm)



En Iwamura
No. 17, 2023
Color Pencil, Crayon, Acrylic paint on paper
6.3" x 8.6" (16 cm x 22 cm)
*Artwork is framed



En Iwamura
No. 15, 2023
Color Pencil, Crayon, Acrylic paint on paper
6.3" x 8.6" (16 cm x 22 cm)
*Artwork is framed



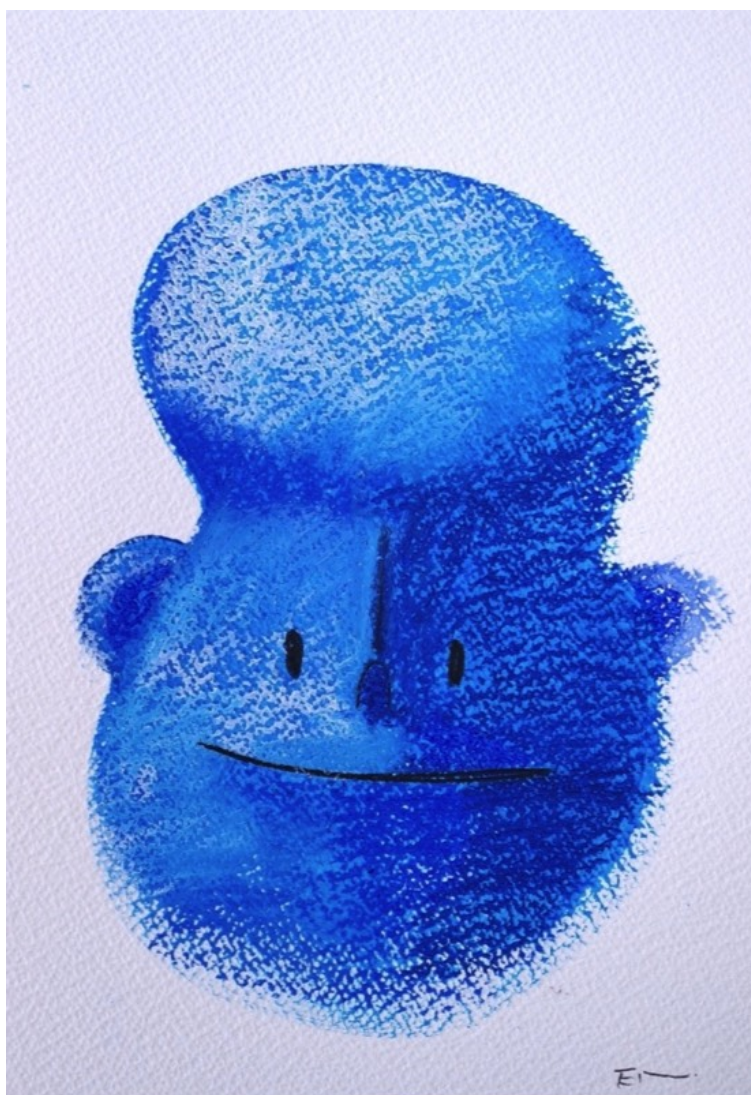
En Iwamura
No. 14, 2023
Color Pencil, Crayon, Acrylic paint on paper
6.3" x 8.6" (16 cm x 22 cm)
*Artwork is framed



En Iwamura
No. 25, 2023
Color Pencil, Crayon, Acrylic paint on paper
6.3" x 8.6" (16 cm x 22 cm)
*Artwork is framed



En Iwamura
No. 16, 2023
Color Pencil, Crayon, Acrylic paint on paper
6.3" x 8.6" (16 cm x 22 cm)
*Artwork is framed



En Iwamura
No. 21, 2023
Color Pencil, Crayon, Acrylic paint on paper
6.3" x 8.6" (16 cm x 22 cm)
*Artwork is framed



En Iwamura
No. 22, 2023
Color Pencil, Crayon, Acrylic paint on paper
6.3" x 8.6" (16 cm x 22 cm)
*Artwork is framed



En Iwamura
No. 18, 2023
Color Pencil, Crayon, Acrylic paint on paper
6.3" x 8.6" (16 cm x 22 cm)



En Iwamura
No. 19, 2023
Color Pencil, Crayon, Acrylic paint on paper
6.3" x 8.6" (16 cm x 22 cm)



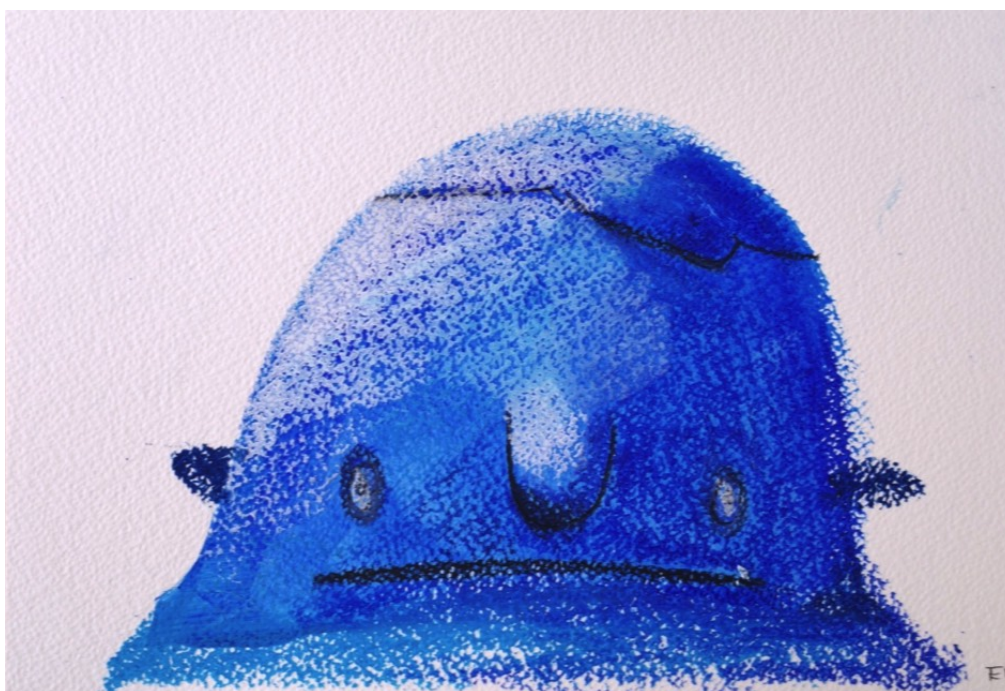
En Iwamura
No. 20, 2023
Color Pencil, Crayon, Acrylic paint on paper
6.3" x 8.6" (16 cm x 22 cm)



En Iwamura
No. 23 2023
Color Pencil, Crayon, Acrylic paint on paper
6.3" x 8.6" (16 cm x 22 cm)



En Iwamura
No. 24, 2023
Color Pencil, Crayon, Acrylic paint on paper
6.3" x 8.6" (16 cm x 22 cm)



En Iwamura
No. 26, 2023
Color Pencil, Crayon, Acrylic paint on paper
6.3" x 8.6" (16 cm x 22 cm)

ANTHONY
GALLERY

SELECTED PRESS / CV

sales@anthonygallery.com

www.anthonygallery.com

T: 312.374.3129

CURRICULUM VITAE

EDUCATION

2013 - 2016 MFA, Visual Art and Teaching assistant/Ceramic, Clemson University, SC, USA
2011 - 2013 MFA, Crafts/Ceramics, Kanazawa College of Art, Kanazawa, Japan
2007 - 2011 BFA, Crafts/Ceramics, Kanazawa College of Art, Kanazawa, Japan

ARTIST IN RESIDENCE

2019-2020 Shigaraki Ceramic Cultural Park, Japan, Resident artist
2019 A.I.R Vallauris, France,
2018 Jingdezhen Ceramic Institute, China, Guest artist
2018 LH Project, Joseph, Oregon, Guest artist
2016-2018 Archie Bray Foundation, Long Term Resident Artist/ Helena, MT

SOLO & TWO-PERSON EXHIBITION RECORD

2023 *Blue on the Hill*, Anthony Gallery, Chicago, IL
2022 *URLANDSCHAFT by EN IWAMURA*, Woaw Gallery, Hong Kong, HK
Always Lonely, Ross+Kramer Gallery, New York, NY
2020 *En Iwamura*, Ross+Kramer Gallery, New York, NY
2019 "UNTITLED ART FAIR" solo booth
En Iwamura Works, Ross + Kramer Gallery, Miami, FL
Legacy in the Vault, Ross+Kramer Gallery, East Hampton, NY
American Museum of Ceramic Art, Pomona, CA
2018 *En Iwamura works*, Ross+Kramer Gallery, East Hampton, NY
2017 *Cultural Shadow*, Gallery of Contemporary Art, St. Louis Community College, St. Louis, MO
2016 *Dear My Heroes*, LLC Gallery, Saint Anselm College, Manchester, NH
2016 *On The Way / Far and Away*, Lee Gallery, Clemson University, Clemson, SC

GROUP SHOWS

2023

The Colour Edit, Baldwin Contemporary, London, UK
Crossing, Lorin Gallery, Los Angeles, CA
As Friends & Partners, Woaw Gallery, Hong Kong, HK

2022

The Holiday Collection: Giftable Objects, Lougher Contemporary, Bristol, UK
Some Like It Hot - Monroe and Faces of Pop Culture, Shout Arthub & Gallery, Hong Kong, HK

2021

Summer Group Show, Ross+Kramer Gallery, New York, NY
1988, Anthony Gallery, Chicago, IL

2020

ARTCELS presents "XXI", HOFA Gallery (House of Fine Art) Los Angeles, CA
Contemporary Icons: Editions and Works on Paper, HOFA Gallery (House of Fine Art) Los Angeles, CA
Contemporary Icons: Sculpture Editions, HOFA Gallery (House of Fine Art) Los Angeles, CA

2019

Ocean Cadence, Soho beach House, Miami, FL
NADA Miami, Stems Gallery, Miami, FL
EXPO Chicago, Richard Heller Gallery, Chicago, IL
Exchange and Experimentation – Toward a New Generation of Ceramic Art Shigaraki Ceramic Cultural Park in Shiga, Japan
New Image Portrait, Stems Gallery, Brussels, Belgium
All that about Gold, The Venetian Macau, Macau
Resident Exhibition, Chapelle de la Miséricorde, Vallauris, France
3331 Art Fair, 3331 Art Chiyoda, Tokyo, Japan

2018

Art Miami, Ross + Kramer Gallery, Art Miami, Miami, FL
Clay Fest Northwest, Pottery Northwest, Seattle, WA
Second-Year Fellowship Artists Exhibition, Holter Museum, Helena, MT
CCACA 30th, John Natsoulas Gallery, Davis, CA
Comics Culture in Clay, Be Gallery Pittsburg, PA
Carrie Furnace NCECA Invitation, Carrie Furnace, Rankin, PA
Fahrenheit 2018, American Museum of Ceramic Art, Pomona, California

PROFESSIONAL EXPERIENCE (Teaching/Academic Appointments/Related Work Experience)

2020

Mentoring With En Iwamura - Online lecture. Clay For Australia.
Virtual Studio Visit/ Ross Kramer Gallery, NYC, USA

2019

Pottery Work Shop -Guest Artist Speaker Series, Shanghai, China

2018

Jindezhen Ceramic Institute - guest artist speaker Series, Jingdezhen China
Joseph Art Center - Guest artist speaker series, Joseph, OR
Chicago Art Institute - Guest artist lecture and demonstration, Chicago, IL
Clay Fest Northwest – Guest artist Lecture and demonstration, Seattle, WA
CCACA 30th annual California Conference for the Advancement of Ceramic Art - Guest artist lecture and demonstration, John Natsoulas Gallery, CA
Visiting artist lecture and workshop, Montana St University, Bozeman, MT
Visiting artist lecture and workshop, Kansas State University, Manhattan, Kansas.

2017

Artist lecture/ St. Louis Community College, St. Louis, MO
Artist lecture and workshop, AMACO booth in NCECA (National Council On Education For the Ceramic Arts) presented by St. Louis Community College
Artist lecture and workshop at Oregon Convention center, Portland, OR

2016

Artist lecture and workshop, Saint Anselm College, Manchester, NH

2015

Artist lecture, Kanazawa College of Art, Kanazawa, Japan

TEACHING EXPERIENCE

2017 Teaching at the Archie Bray Foundation
2013-2016 teaching assistant, Clemson University, Clemson, SC
2011- 2013 teaching assistant, Kanazawa College of Art, Kanazawa, Japan

PRESS

2022

December 29, 2022

COLOSSAL

Ceramic Head Sculptures by En Iwamura Explore Philosophies of Movement and Space

<https://www.thisiscolossal.com/2019/12/ceramic-head-sculptures-en-iwamura/>

Dec 28, 2022

Highsnobiety

INFINITE ARCHIVES & EN IWAMURA'S CERAMIC ODE TO 1988

<https://www.highsnobiety.com/p/infinite-archives-en-iwamura/>

Dec 28, 2022

Hypebeast

En Iwamura and Easy Otabor Release Hybrid Vase Sculptures

<https://hypebeast.com/2022/12/en-iwamura-easy-otabor-vase-sculpture-infinite-archives>

October 14, 2022

Nowness

Communities: En Iwamura & Shigaraki Village

<https://www.nowness.com/story/avant-arte-communities-en-iwamura-shigaraki-village>

June 17, 2022

It's Nice That

With bulbous bodies and bemused expressions, En Iwamura's sculptures are the definition of endearing

<https://www.itsnicethat.com/articles/en-iwamura-neo-jomon-beans-art-170622>

May 30, 2022

South China Morning Post

Did Hong Kong's art scene survive the pandemic? Small gallery curators weigh in on weathering quarantine restrictions and a world without international collectors

<https://www.scmp.com/special-reports/article/3179118/did-hong-kongs-art-scene-survive-pandemic-small-gallery-curators>

May 27, 2022

Artnet

Day in the Life: Follow Serial Entrepreneur Kevin Poon as He Installs an Art Show at a Restaurant & Browses Art Basel Hong Kong

<https://news.artnet.com/art-world/kevin-poon-day-in-the-life-2123068>

May 26th, 2022

Lifestyle Asia

10 Must-See Art Exhibitions in Hong Kong This June

<https://www.lifestyleasia.com/hk/culture/art/best-art-exhibitions-hong-kong-june/>

May 25, 2022

Creative Boom

Japanese artist En Iwamura's fanciful sculptures are a holiday for the mind

<https://www.creativeboom.com/news/neo-jomon-beans/>

2021

Juxtapoz

En Iwamura: Encounters in Space

<https://www.juxtapoz.com/news/magazine/features/en-iwamura-encounters-in-space/>

December 17, 2021

This is Colossal

Waves of Engraved Lines Texture the Emotional Figures Sculpted by En Iwamura

<https://www.thisiscolossal.com/2021/12/en-iwamura-sculpture/>

Jun 8th, 2021
Maake Magazine
Interview with En Iwamura
<https://rkgallery.com/artist/en-iwamura>

2019

September 10, 2019
Hi Fructose
En Iwamura Explores 'Ma' in Recent Show
<https://hifructose.com/2019/09/10/en-iwamura-explores-ma-in-recent-show/>

Jan 21st, 2019
Missoulain
Uncanny Spaces: Archie Bray artist En Iwamura changes the world one big head at a time
https://missoulain.com/entertainment/arts-and-theatre/uncanny-spaces-archie-bray-artist-en-iwamura-changes-the-world-one-big-head-at-a/article_e759b9e1-dbd9-bc0d-d8174da279b4.html

Jan 6th, 2019
Juxtapoz
In Conversation: En Iwamura Ceramics as Universal Language
<https://www.juxtapoz.com/news/sculpture/in-conversation-en-iwamura-ceramics-as-universal-language/>

2018

En Iwamura- Artist with no borders
Curated Kyoto
<https://www.curatedkyoto.com/blog/en-iwamura-artist-with-no-borders/>

October 14, 2018
Design Boom
En Iwamura investigates form and space with series of ceramic sculptures
<https://www.designboom.com/art/en-iwamura-sculptures-10-14-18/>